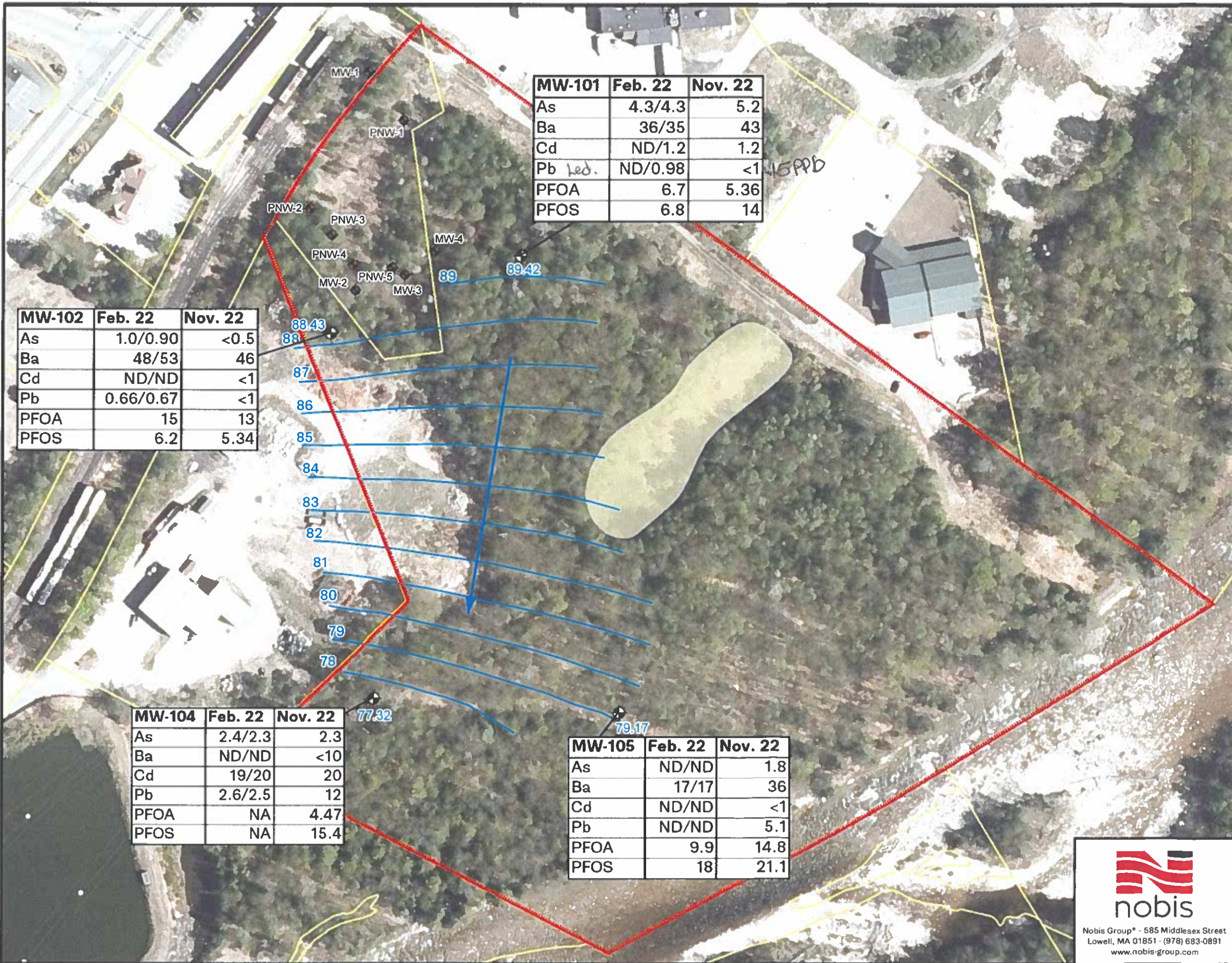


\\nobis.local\shares\Projects\Active\097031 001-Riverfront Park\GIS\Figures\Figure 5 - Groundwater Contaminant Distribution.mxd 3/31/2023 16:33 tlistori



Notes:

1. Locations of site features depicted hereon are approximate and given for illustrative purposes only.

2. Concentrations of metals are in micrograms per liter (µg/L) and concentrations of PFAS are in nanograms per liter (ng/L). Metals are shown as "total/dissolved". Concentrations above applicable AGQS are shown in bold.

3. ND = Not detected. NA = Not analyzed.

4. The defined boundary of the "Site" is for planning and construction purposes to separate proposed park redevelopment from the Transfer Station. The Site exists within the larger boundary of the properties owned by the Town of Lincoln (Tax Map 112, Lots 008 and 009).

Legend

- Monitoring Well
- HRP Monitoring Well (1999-2001)
- DuBois & King Monitoring Well (1985)
- Groundwater Elevation Contour (11/4/2022)
- Groundwater Flow Direction (11/4/2022)
- Sludge Disposal Area
- Site Outline
- Parcel Boundaries

0 62.5 125 250
Feet
1 inch = 125 feet

N

nobis

Nobis Group® - 585 Middlesex Street
Lowell, MA 01851 - (978) 683-0891
www.nobis-group.com

FIGURE 5

GROUNDWATER CONTAMINANT DISTRIBUTION
RIVERFRONT PARK
LINCOLN, NEW HAMPSHIRE

PREPARED BY: TF	CHECKED BY: TA
PROJECT NO. 097031.001	DATE: MARCH 2023



Notes:

1. Locations of site features depicted hereon are approximate and given for illustrative purposes only.
2. Concentrations are in milligrams per kilogram (mg/kg). Concentrations above applicable SRS are shown in bold.
3. The defined boundary of the "Site" is for planning and construction purposes to separate proposed park redevelopment from the Transfer Station. The Site exists within the larger boundary of the properties owned by the Town of Lincoln (Tax Map 112, Lots 008 and 009).

Arsenic As 11 parts per million acceptable.

Legend

- 2022 Sludge Sample with Exceedance
- 2022 Sludge Sample
- 2017 Calex Soil Sample with Exceedance
- 2017 Calex Soil Sample
- Sludge Disposal Area
- Site Outline
- Parcel Boundaries



Nobis Group® - 18 Chenell Drive
Concord, NH 03301 - (603) 224-4182
www.nobis-group.com

FIGURE 3

SLUDGE DISPOSAL AREA
SOIL CONTAMINANT DISTRIBUTION
RIVERFRONT PARK
LINCOLN, NEW HAMPSHIRE

PREPARED BY: TF
PROJECT NO. 097031.001

CHECKED BY: TA
DATE: MARCH 2023